



ECL Star : the first choice to light up your western blot!

Developed to be the leader in its market segment, ECL Star is an excellent chemiluminescent reagent for your daily routine WB analysis.

Optimized Sensitivity

Signal intensity among the highest compared to standard ECL substrates

Low Background

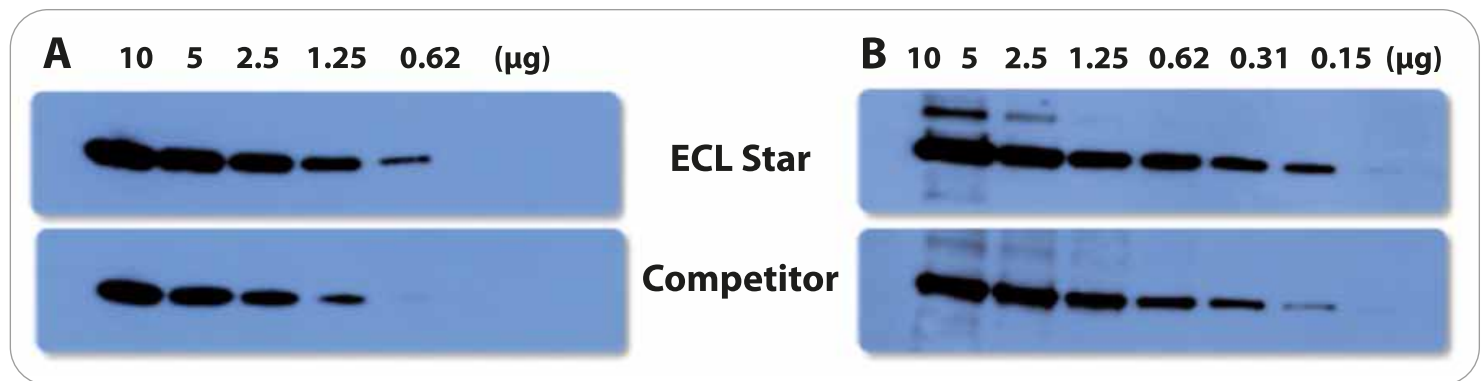
High signal-to-noise ratio

Stable Working Solution

Ready working solution is stable for at least 5 days

Code	Description	Size
EMP001005	ECL Star	500 ml

SAMPLE AVAILABLE



High sensitivity compared to competitor ECL substrate.

His-Tag protein in *E. Coli* Lysate(A) and Actin protein from HeLa lysate (B) were detected by Western blotting. The membranes were blocked with TBS with 5% BSA and probed with 1/1,000 primary antibody. The membranes were washed, incubated with 1/15,000 secondary antibody and then washed again. Working solution of the competitor ECL substrate was prepared according to the manufacturer's instructions. The membranes were removed from the substrates and the signal was detected using the GE Healthcare ImageQuant LAS 4000 with 1 minute exposure.

ECL Star is made by and sold under license from Cyanagen srl and is subject to Cyanagen's patents US-2008-0241868-A1, US-2011-0053200-A1, EP-1962095, EP-1950207, US-2008-0176251-A1 and other equivalent patents or pending patents.

EuroClone S.p.A.

Via Figino, 20/22 • 20016 Pero (MI) Italy • ☎ +39 02 38195.1 • 📠 +39 02 38101465 • ✉ info@euroclone.it • www.euroclone.it

Quality Management Systems certified according to ISO 9001 and ISO 13485 international standards